

Welcome to Ballari, the Steel City



Come journey with us in Ballari.....



PARTNERS IN MISSION; SISTERS AND LAY



THE MISSION PARTNERS

You make the world a better place by making yourself a better person.



CREATING AWARENESS ON PLASTIC FREE SCHOOL - PLASTIC BOTTLES REPLACED WITH STEEL BOTTLES



DISCUSSIONS AND DELIBERATIONS TO FOSTER MISSION EFFECTIVENESS



AN ECOFRIENDLY CAMPUS

Setting examples, guiding and leading....

A MISSION JOURNEY

Campaigning for green and clean campus



Out reach program in Chikkahesarur,
instilling the values of reaching
to the less privileged

“ Earth is our mother. In spite of our desire to harm our mother she will always love us.”

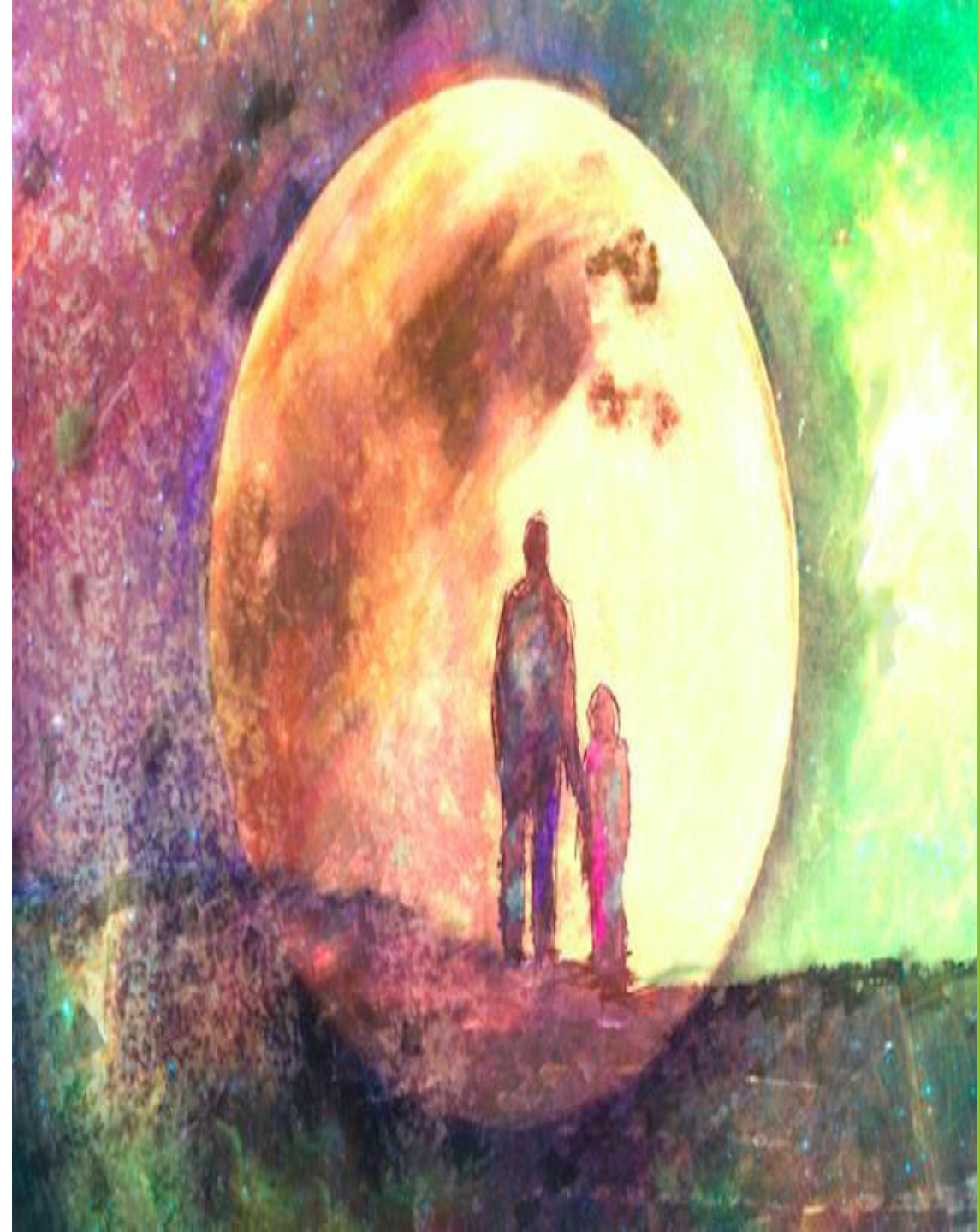


Awareness through action....



OTHER ACTIVITIES

- ▶ VISITING HOUSES OF THOSE IN THE MARGINS OF THE SOCIETY
ALONG WITH THE SISTERS
- ▶ CO- ORDINATING THE SOCIAL SERVICE ACTIVITIES OF THE SCHOOL
AND MOTIVATING THE CHILDREN TO SEE THE FACE OF GOD IN
THE LESS PRIVILEGED
- ▶ GUIDING AND ACCOMPANYING THE STUDENTS IN SOCIAL
SERVICE ACTIVITIES
- ▶ SUPPORTING THE WEAK CHILDREN THROUGH ADDITIONAL
COACHING.



OUR REFLECTION



1. What is the one lesson that you have learnt in your Mission Partnership work, so far?

- We have learnt to make positive impact with our mission work by doing small things with much love.



2. What is the one challenge you have faced in your Mission Partnership work, so far?

To do the balancing act between the career commitments and mission partnership commitments.



3. What is the one thing you recommend to **CHANGE IN THE WAY** Mission Partnership work is going at your respective ministry?

- ❖ To make the mission partnership more organised and planned.

4. What is your plan 2023 as Mission Partners in your ministry?

- ❖ Knowing the God given gifts for helping us to perform the role of Mission Partners effectively.
- ❖ To improve our contribution to the Good Shepherd Mission through varied programs.



Together for the Mission.....



Thank You

The text "Thank You" is rendered in a highly decorative, cursive script. The letters are a deep red color with a thick, gold-colored outline that gives them a three-dimensional appearance. The text is embellished with clusters of vibrant red roses and green foliage. Two small, white hummingbirds with detailed wings are positioned above the letters: one above the 'T' and another above the 'Y'. The entire graphic is set against a white background, which is itself placed on a larger green geometric pattern.